

Tiny House Family

„Malaga Sun”

www.TinyHouseFamily.pl



PRODUCER OF PREMIUM MOBILE HOMES

Tiny House Family is a family brand created by a father and two sons. Two generations and three characters with one vision and one goal: freedom, independence and comfort. We build mobile homes to travel the world. We prove that travelling in a tiny house can be comfortable and help make dreams come true. Every tiny house on wheels built by our company is a compact version of a standard flat with a living room, kitchen, bathroom and bedroom.

It might seem that our job is solely to build mobile houses, but actually, we bring people together. We demonstrate that staying in a small space can be associated with pleasure – with a family bonding time, challenges and real-life adventures. We make sure that customers can enjoy living standards unavailable in ordinary caravans. We put our hearts into building every home, and our clients appreciate such individual approach, kindness and quality.

„Malaga Sun”



- 🛏 Six sleeping places
- 🚿 Bathroom with 90 cm x 90 cm shower, washbasin and water heater
- 🍴 Spacious kitchen with wooden countertop, heating plate and sink
- 📏 Dimensions: 7,2 m x 2,5 m x 4,0 m





The „Malaga Sun“ mobile home is a family-sized tiny house designed for up to 6 people. The „Malaga Sun“ model combines functionality, excellent space planning and clever solutions to facilitate daily activities. This mobile home can come in any colour, standard and finish - in any case, it is up to the customer to decide what their home on wheels would look like.

The „Malaga Sun“ mobile home is just like any other well-designed house or apartment. When building it, we were guided by the highest standards. Our goal was to design a structure that would be simultaneously beautiful and functional.



Experience genuine freedom!

MOBILE HOMES

Relaxation and independence in the comfortable environment

Construction:

- about 8cm of pure-foam housewarming, insulated by an xps plate and thermal insulation mat
- hard composite fasade of Customer's choice colour, no need to impregnate
- light steel construction

Instalations:

- heat pump supported air conditioning
- mechanical ventilation
- place for TV
- Wi-Fi controlled floor heating
- water and sewage connection

General:

- overall dimensions: 7,2 m x 2,5 m x 4,0 m
- vinyl floor
- exotic wood furniture
- 8 cabinets built into stairs (including place for washing machine and dishwasher)
- two entresols (2,5 m x 2,2 m and 1,5 m x 2 m)
- six sleeping places
- white wood panelling
- LED lighting
- double-leaf entrance door
- 8 double-glazed windows

Living room:

- space for corner sofa
- space for coffee table

Kitchen:

- wooden 3-meter kitchen worktop
- two-burner hoveotop
- single bowl sink
- kitchen hood
- 3 ground cabinets (including space for the oven)
- 3 top cabinets
- space for refrigerator

Bathroom:

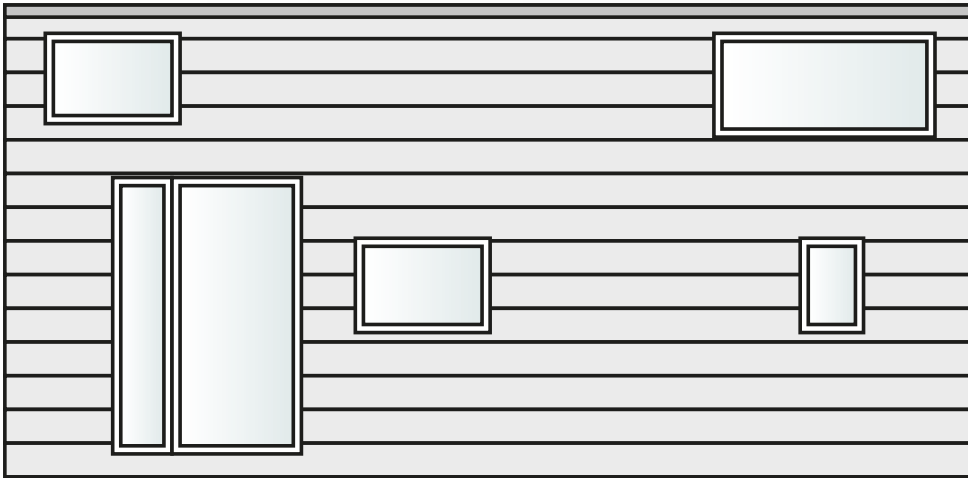
- 90 cm x 90 cm shower
- sink
- closet under the sink
- water heater
- toilet



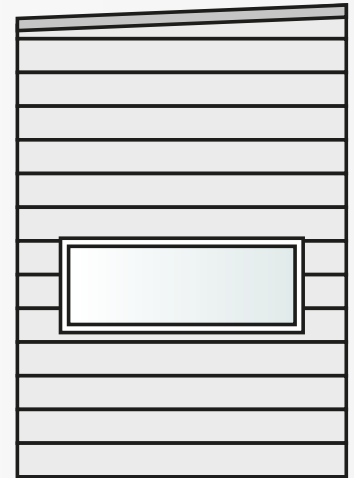
HOME



ELEVATION PROJECTIONS



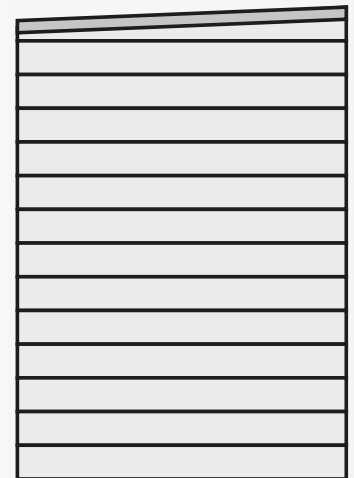
FRONT ELEVATION



TOP ELEVATION

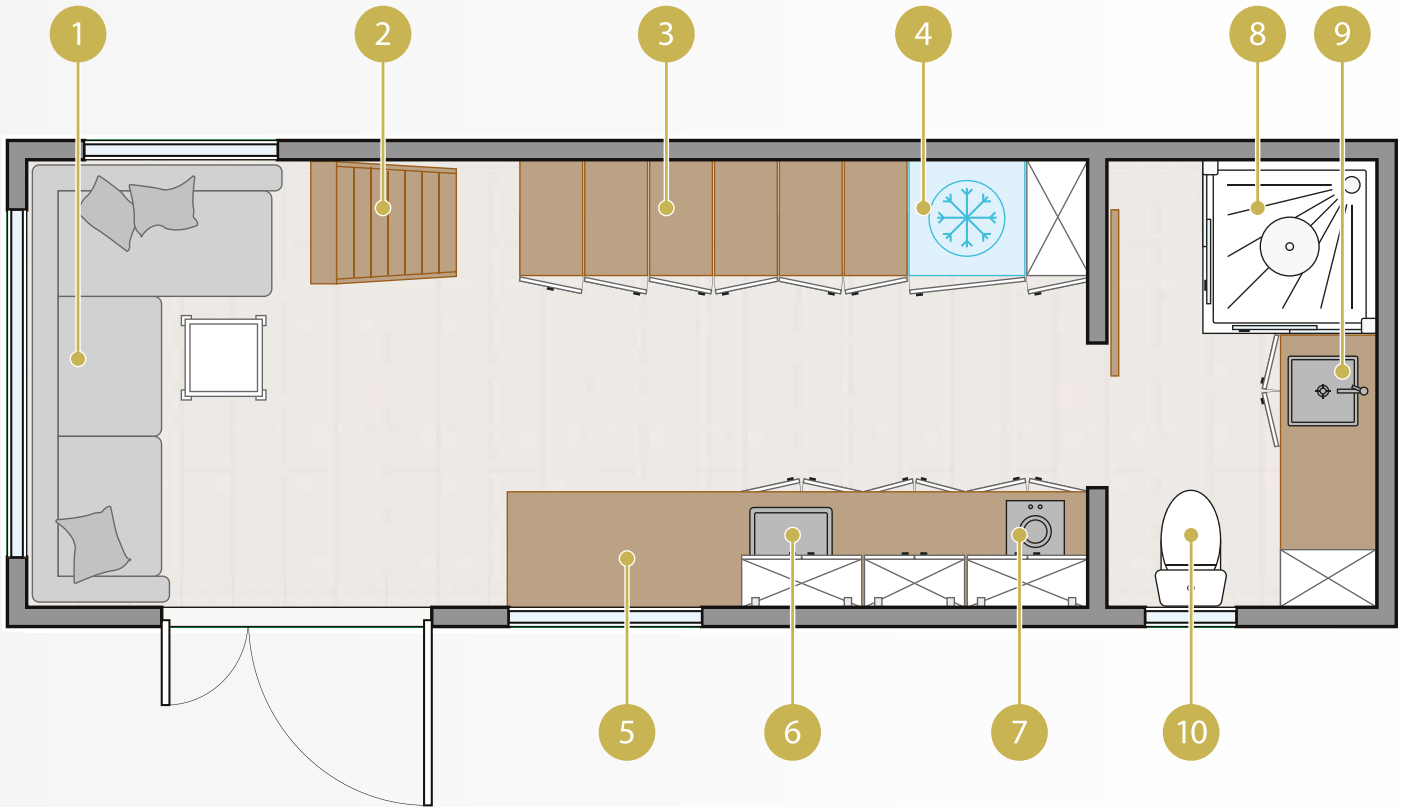


BACK ELEVATION



TOP ELEVATION

GROUND FLOOR PROJECTIONS



1. Space for corner sofa
2. Entresol ladder
3. Entresool staircase with built-in drawers and space for washing mashine and dishwasher
4. Space for refrigerator
5. 3-meter wooden worktop
6. Single bowl sink
7. Two-burner hovetop
8. 90 cm x 90 cm shower
9. Sink
10. Toilet

Area:

- living room with kitchenatte - 15 sq. m
- bathroom - 3 sq. m
- total area including entresols - 26,5 sq. m



TINY HOUSE FAMILY



office@tinyhousefamily.pl

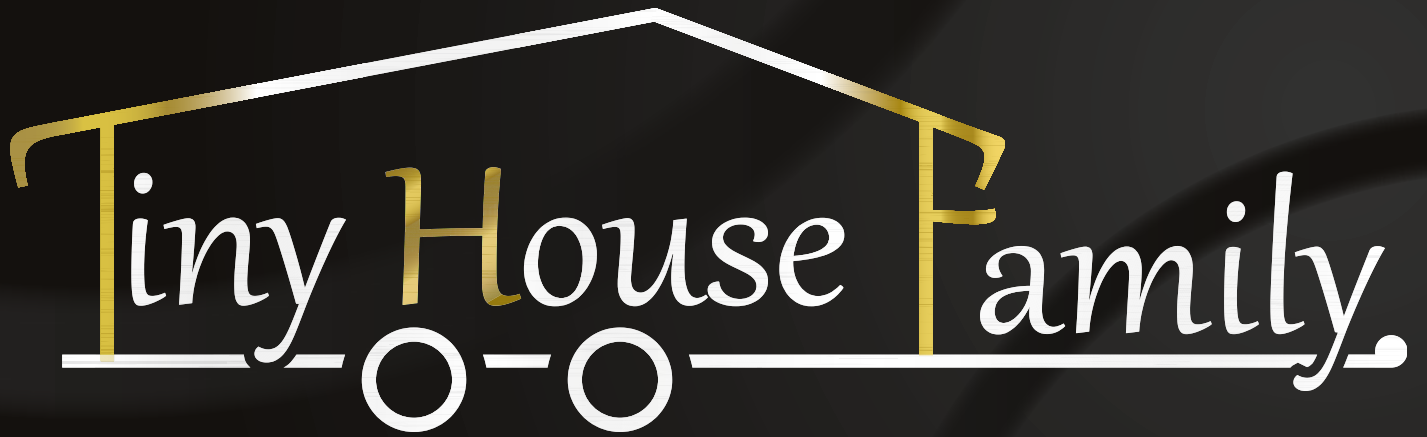


+48 536 114 768

www.TinyHouseFamily.pl







Tiny House Family.

The logo features the text "Tiny House Family." in a white, cursive font. The word "Tiny" is partially enclosed by a white outline of a house's roof and walls, which is accented with a gold gradient. Below the text, a white horizontal line represents a trailer, with two white circles representing wheels. The entire design is set against a dark gray background with subtle, curved light patterns.