

Tiny House Family

„Costa del Sol”

[www.TinyHouseFamily.pl](http://www.TinyHouseFamily.pl)



# PRODUCER OF PREMIUM MOBILE HOMES

Tiny House Family is a family brand created by a father and two sons. Two generations and three characters with one vision and one goal: freedom, independence and comfort. We build mobile homes to travel the world. We prove that travelling in a tiny house can be comfortable and help make dreams come true. Every tiny house on wheels built by our company is a compact version of a standard flat with a living room, kitchen, bathroom and bedroom.

It might seem that our job is solely to build mobile houses, but actually, we bring people together. We demonstrate that staying in a small space can be associated with pleasure – with a family bonding time, challenges and real-life adventures. We make sure that customers can enjoy living standards unavailable in ordinary caravans. We put our hearts into building every home, and our clients appreciate such individual approach, kindness and quality.

# „Costa del Sol”



- 🛏 Six sleeping places
- 🚿 Bathroom with 80 cm x 80 cm shower, washbasin and water heater
- 🍴 Spacious kitchen with wooden countertop, heating plate, sink and folding table
- 📏 Dimensions: 8,4 m x 2,5 m x 4,0 m



„Costa del Sol“ is the biggest Tiny House on wheels in our offer. Due to the space available, it was possible to create a room, which - during the day - is used as a living room during the day, and as a bedroom at nighttime. The kitchen was equipped with a folded table, attached to a wall, which - when closed - allows for more space in the room.

„Costa del Sol“ is suitable for use during whole year. It combines interior functionality, modern solutions and classical elegance. The Tiny is suitable for 6 tenants, it can be adjusted to the Customer's specific demands.



Experience genuine freedom!

# MOBILE HOMES

*Relaxation and independence in the comfortable environment*

## **Construction:**

- about 8cm of pure-foam housewarming, insulated by an xps plate and thermal insulation mat
- wooden facade combined with seam sheet metal (Customer-selected colour);
- light steel construction

## **Instalations:**

- heat pump supported air conditioning
- mechanical ventilation
- place for TV
- Wi-Fi controlled floor heating
- water and sewage connection

## **General:**

- overall dimensions: 8,4 m x 2,5 m x 4,0 m
- vinyl floor
- 8 closets and 1 drawer built into the stairs
- two large entresols (2,5 m x 2,2 m)
- six sleeping places
- white wood panelling
- LED lighting
- double-leaf entrance door
- 7 double-glazed windows

## **Living room with closed bedroom function:**

- space for corner sofa or bed
- space for coffee table
- wooden accordion door

## **Kitchen:**

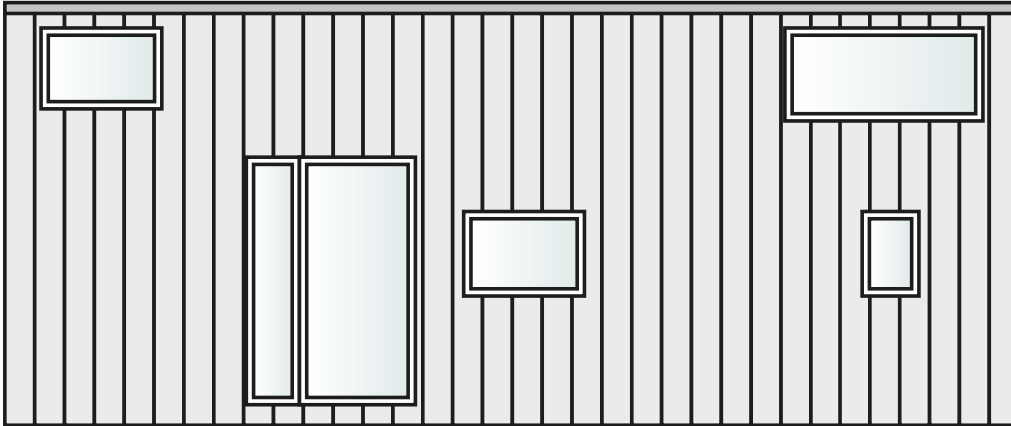
- wooden kitchen worktop
- two-burner hove-top
- single bowl sink
- kitchen hood
- 4 ground cabinets (including space for the dishwasher)
- 5 top cabinets
- space for refrigerator
- folded table
- folded chairs

## **Bathroom:**

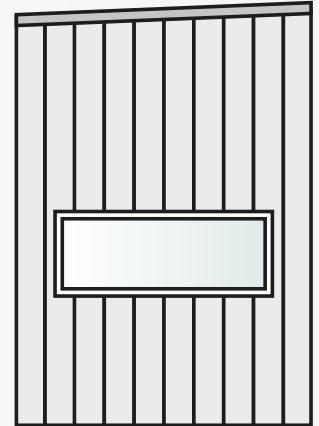
- 80 cm x 80 cm shower
- sink
- closet under the sink
- water heater
- toilet
- space for a washing machine



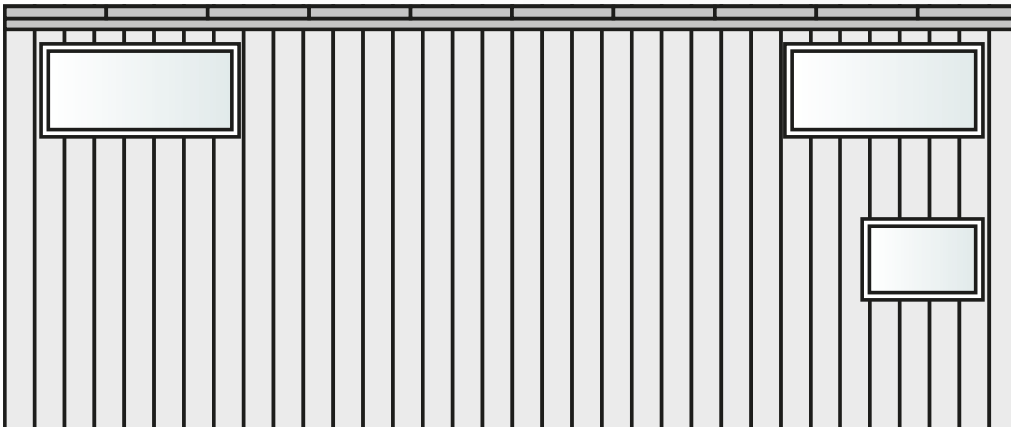
# ELEVATION PROJECTIONS



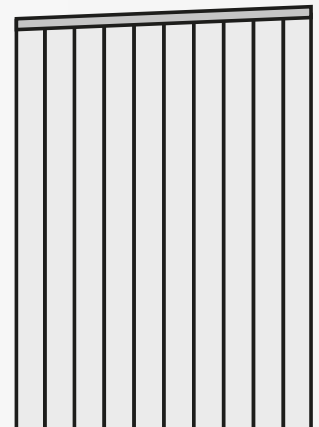
FRONT ELEVATION



TOP ELEVATION



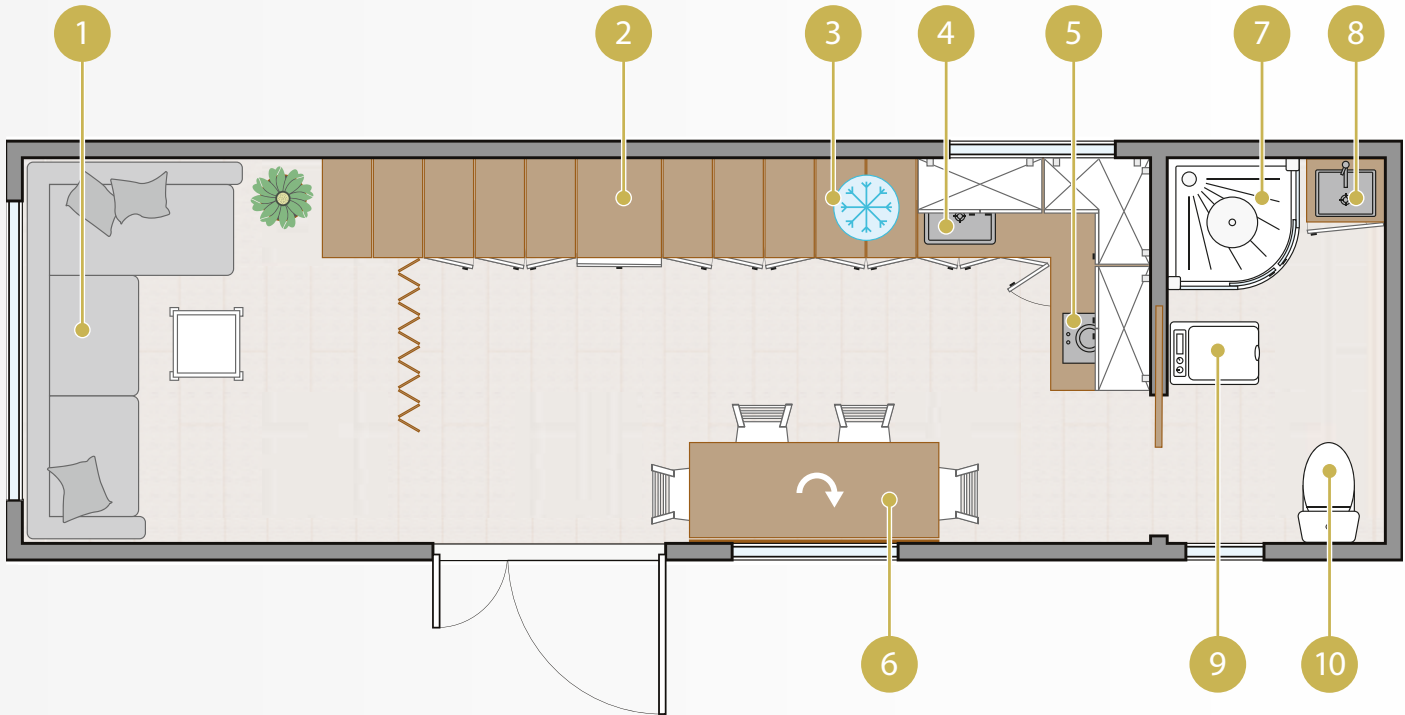
BACK ELEVATION



TOP ELEVATION



# GROUND FLOOR PROJECTIONS



1. Space for corner sofa or bed
2. Stairs for both entresools with built-in cabinets and drawer
3. Space for refrigerator
4. Single bowl sink
5. Two-burner hove-top
6. Folded table
7. 80 cm x 80 cm shower
8. Sink
9. Space for a washing machine
10. Toilet

## Area:

- living room serving as locked bedroom and kitchen with dining room - 18 sq. m (including bedroom - 4 sq. m )
- bathroom - 3 sq. m
- total area including entresols - 32 sq. m



## TINY HOUSE FAMILY




[office@tinyhousefamily.pl](mailto:office@tinyhousefamily.pl)



+48 536 114 768

[www.TinyHouseFamily.pl](http://www.TinyHouseFamily.pl)





*Tiny House Family.*

The logo features the text "Tiny House Family." in a white, cursive font. The word "Tiny" is partially enclosed by a white outline of a house with a gabled roof. The word "House" is also partially enclosed by the same house outline. The word "Family." is written to the right of the house outline. Below the text, there is a white horizontal line with two white circles representing wheels, connected by a short horizontal line. The entire logo is set against a dark gray background.