

Tiny House Family

„Bristol Brick”

www.TinyHouseFamily.pl



PRODUCER OF PREMIUM MOBILE HOMES

Tiny House Family is a family brand created by a father and two sons. Two generations and three characters with one vision and one goal: freedom, independence and comfort. We build mobile homes to travel the world. We prove that travelling in a tiny house can be comfortable and help make dreams come true. Every tiny house on wheels built by our company is a compact version of a standard flat with a living room, kitchen, bathroom and bedroom.

It might seem that our job is solely to build mobile houses, but actually, we bring people together. We demonstrate that staying in a small space can be associated with pleasure – with a family bonding time, challenges and real-life adventures. We make sure that customers can enjoy living standards unavailable in ordinary caravans. We put our hearts into building every home, and our clients appreciate such individual approach, kindness and quality.

„Bristol Brick”



- 🛏 Six sleeping places
- 🚿 Bathroom with 90 cm x 70 cm shower, washbasin and water heater
- 🍴 Spacious kitchen with wooden countertop, heating plate and sink
- 📏 Dimensions: 7,2 m x 2,5 m x 4,0 m





The „Bristol Brick“ is a mobile, year-round tiny house designed for 6 people. The tiny combines spacious, modern interior with carefully chosen solutions, thanks to which on what seems to be small area, it is possible to live with pleasure.

While designing this model, we aimed for best quality components, and creating innovative design at the same time. „Bristol Brick“ contains two entresoles, living room with kitchen kitchenette, and bathroom. The elevation is made with hard composite which imitates a brick, thus creating unique character of the tiny.



Experience genuine freedom!

MOBILE HOMES

Relaxation and independence in the comfortable environment

Construction:

- about 8 cm of pure-foam housewarming, insulated by an xps plate and thermal insulation mat
- hard composite facade, no need to impregnate, brick imitation
- light steel construction

Instalations:

- heat pump supported air conditioning
- mechanical ventilation
- place for TV
- Wi-Fi controlled floor heating
- water and sewage connection

General:

- overall dimensions: 7,2 m x 2,5 m x 4,0 m
- vinyl floor
- Ikea furniture
- two entresols (2,5 m x 2,2 m and 1,5 m x 2 m)
- two entresol ladders
- two closets on a big entresol
- six sleeping places
- exotic wood walls, covered with wallpaper
- double-leaf entrance door
- 5 double-glazed windows

Living room:

- space for corner sofa
- space for coffee table

Kitchen:

- wooden 3-meter kitchen worktop
- two-burner hoveetop (ceramic or induction)
- single bowl sink
- kitchen hood
- 3 ground cabinets (including space for the oven)
- 4 top cabinets
- space for refrigerator

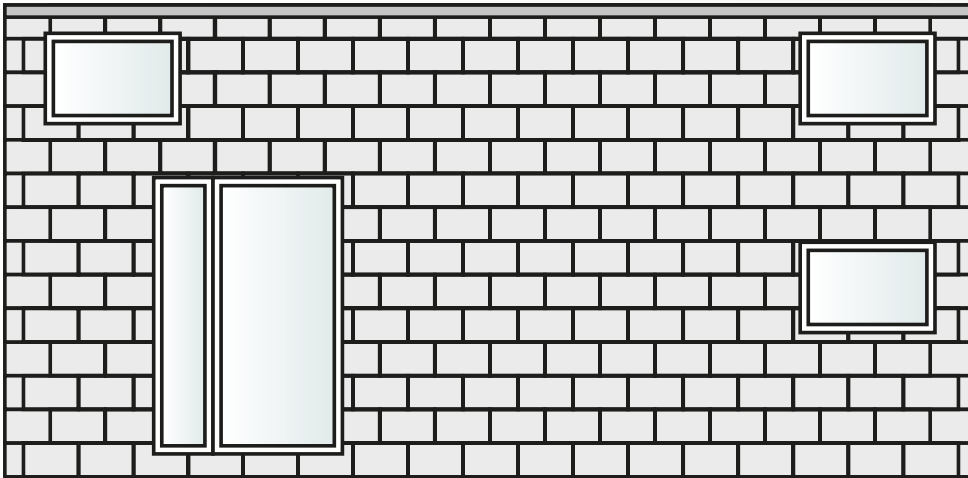
Bathroom:

- 90 cm x 70 cm shower
- sink
- closet under the sink
- water heater
- toilet

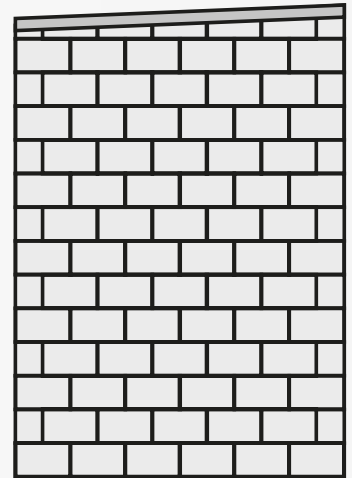




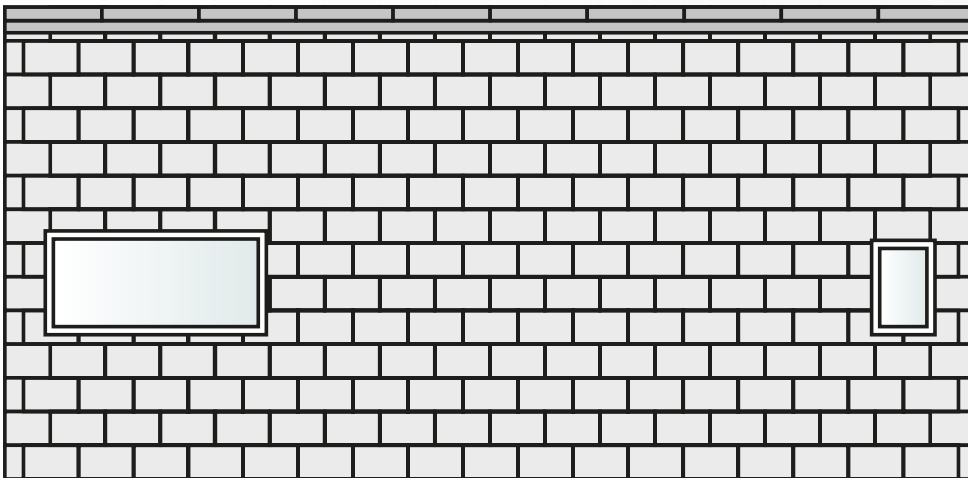
ELEVATION PROJECTIONS



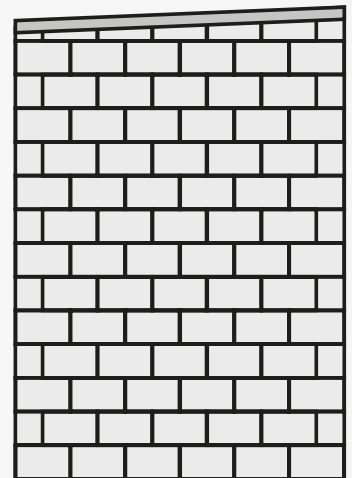
FRONT ELEVATION



TOP ELEVATION

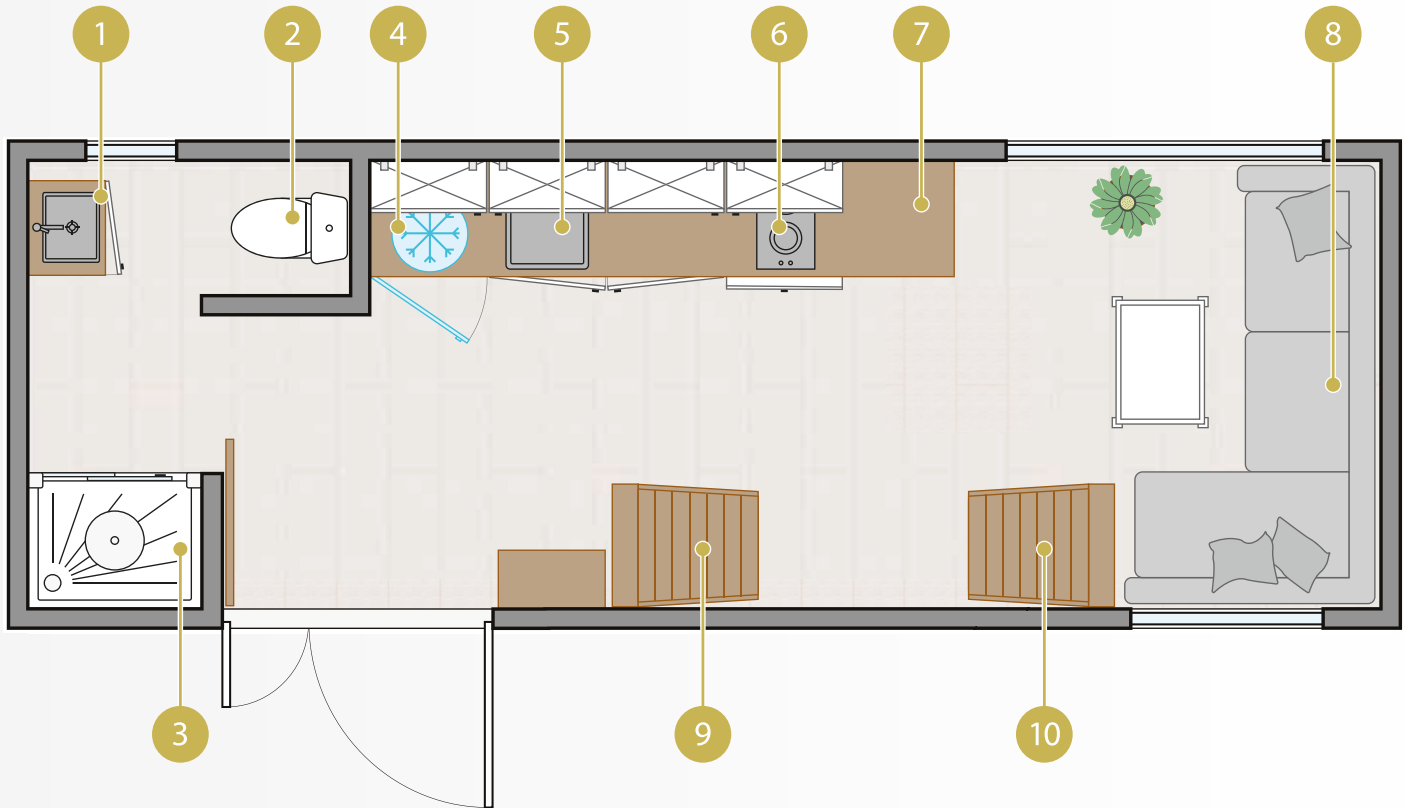


BACK ELEVATION



TOP ELEVATION

GROUND FLOOR PROJECTIONS



1. Sink
2. Toilet
3. 90 cm x 70 cm shower
4. Space for refrigerator
5. Single bowl sink
6. Two-burner hoveetop
7. 3-meter wooden worktop
8. Space for corner sofa
9. Large entresol ladder
10. Smal entresol ladder

Area:

- living room with kitchenatte - 15 sq. m
- bathroom - 3 sq. m
- total area including entresols - 26,5 sq. m



TINY HOUSE FAMILY



office@tinyhousefamily.pl

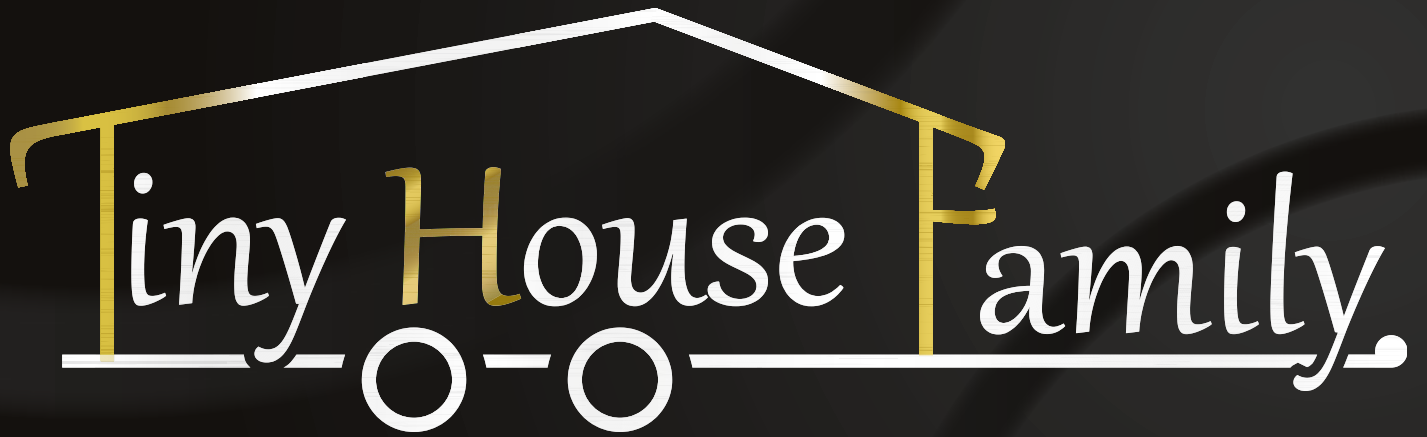


+48 536 114 768

www.TinyHouseFamily.pl







Tiny House Family.

The logo features the text "Tiny House Family." in a white, cursive font. The word "Tiny" is partially enclosed by a white outline of a house with a gabled roof. The word "House" is also partially enclosed by the same house outline. The word "Family." is written to the right of the house outline. Below the text, there is a white horizontal line with two white circles representing wheels, connected by a short horizontal line. The entire logo is set against a dark gray background.