



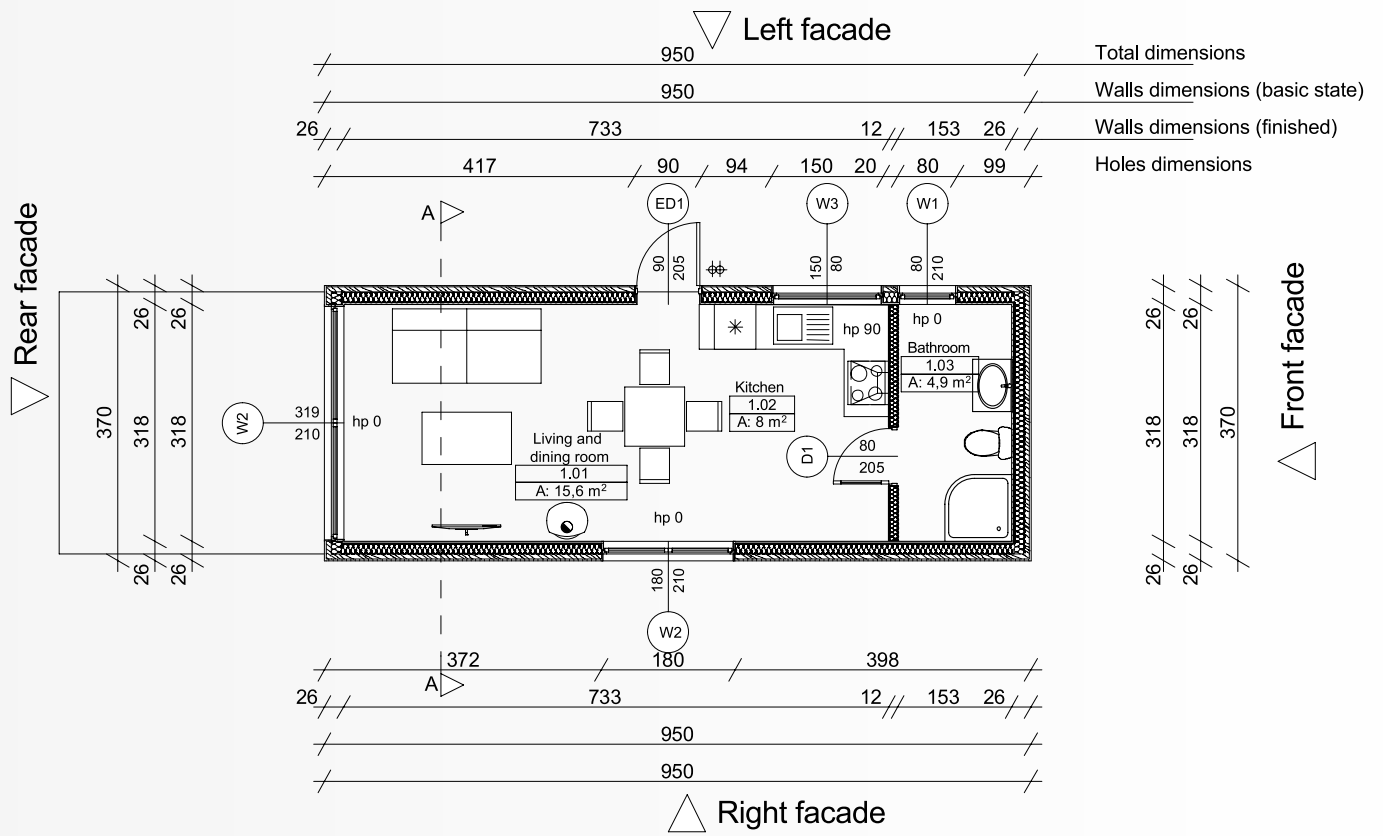
## „Modern Barn”

The Modern Barn is a modular mobile home with a wooden structure. The width of the building is only 370 cm, making it ideal for a narrow plot of land. The classic form of the „modern barn” makes this project fit into any environment. Inside, however, a functional space optimal for a single or a couple has been planned – a living room with a kitchen, a bedroom with access to a striking terrace and a bathroom.

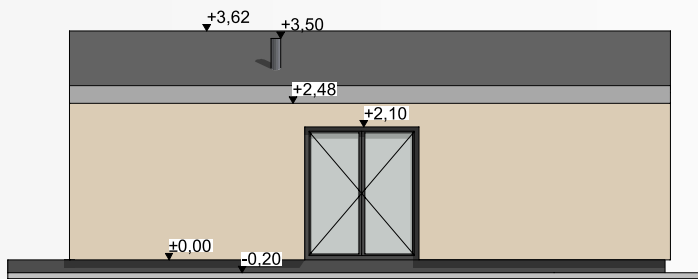


📐 Building area - 35 m<sup>2</sup>

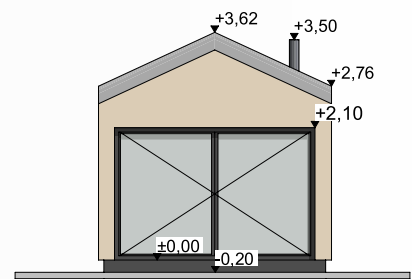
🏠 Usable area - 28,2 m<sup>2</sup>



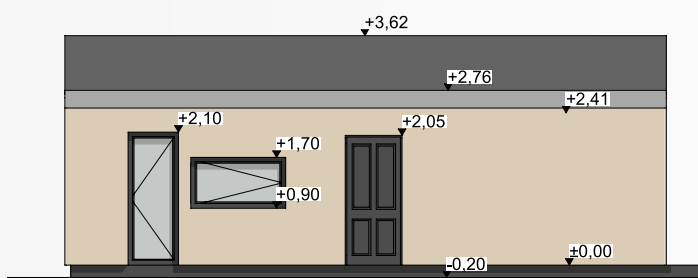
[www.TinyHouseFamily.pl](http://www.TinyHouseFamily.pl)



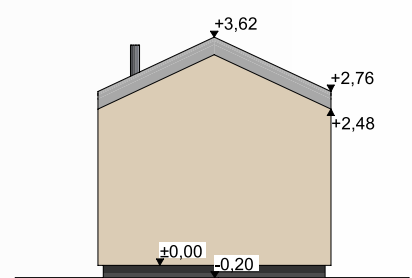
RIGHT FACADE



FRONT FACADE



LEFT FACADE



REAR FACADE